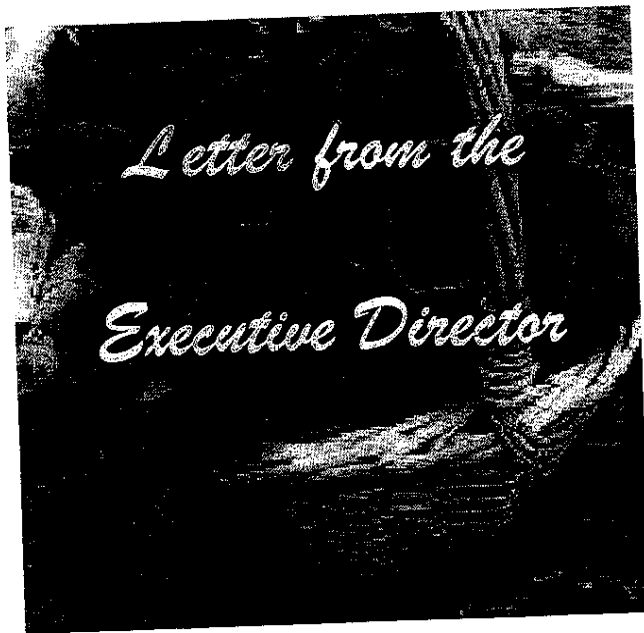


# 2011

Kansas City Community Gardens





Dear friends and gardeners,

2011 was a very exciting (and intense) year of growth for KCCG. We grew in so many ways! This year we helped more than 900 families to have their own food gardens. KCCG also saw big increases in the number of school gardens and community partner gardens. As you drive around Kansas City, chances are that somewhere you will see one of the 268 school gardens or partner gardens.

KCCG also constructed two new large community garden sites to help meet the need for garden space. The Ivanhoe-Richardson garden opened in June and the Eastwood Hills Garden is scheduled to open in spring 2012. We also built raised bed community garden space at Research Medical Center and additional raised beds at the Swope Park Garden and Freeway Park Garden. Over the whole year, we built 397 raised beds throughout the metro area.

Our staff also grew this year. We started the year with four people and added 5 new people over the last 10 months to help with new projects and programs. MaryAnna Henggeler, Phil Meyer, Sharon Goldstein, Bobby Wright and Kathy Jenkins Hart joined the KCCG team this year and we are very glad to have them!

Thank you all for your involvement and support for community gardens. With your help we will continue to grow and serve the Kansas City metro area for years to come.

Sincerely,

Ben Sharda  
Executive Director

## Board of Directors

Deandra Palmer  
Becky Johnston  
Izola Pickett  
Vince Magers

Sammy Howell  
Henry Marder

Vicki Johnson  
Laura Scott  
Augusta Wilbon

President  
Vice President  
Secretary  
Treasurer

Larry Lehman  
Pati Thompson

## Advisory Board

Jill Bunting  
Leanna Flandermeyer  
Anna Graether

Phoebe Bunting  
Dody Gates  
Andrew Kaplan  
Alison Ward

Richard B. Cray  
Lorelei Gibson  
George Kroh

## Staff

Ben Sharda  
Andrea Mathew  
Earlene Franks  
Phil Meyer  
MaryAnna Henggeler  
Mary Roduner  
Bobby Wright  
Sharon Goldstein  
Kathy Jenkins Hart

Executive Director  
Program Director  
Administrative Assistant  
Garden Manager  
Schoolyard Gardens Coordinator  
Beanstalk Garden Coordinator  
Get Growing KC Team Member  
Get Growing KC Team Member  
Development Coordinator



## Program Statistics

10/01/10 - 09/30/11

Green Card Members (low-income households)	945
Yellow Card Members (non-low income households)	457
Community Partner Gardens	152
School Gardens	114
Students Participating in Schoolyard Garden Program	4,038
Children Participating at the Beanstalk Children's Garden	2,774
Garden Plots Tilled Metro-Wide	809
Number of seeds packaged for 2011 Garden Season	27,559
Number of plants grown for 2011 Garden Season	59,070

# Kansas City Community Gardens

## Financial Statements

### Revenue and Expenses (10/01/10 - 09/30/11)

<b>Revenues and gains:</b>	
United Way	\$ 24,000
Supporting groups	25,717
Supporting business	22,770
Supporting foundations	328,937
Supporting individuals	32,913
Miscellaneous contributions	908
Government grant	74,123
Program service revenue	34,097
Merchandise sales	6,643
Unrealized gain on investments	<u>(1,694)</u>

**Total revenues and gains**      **\$547,414**

<b>Expenses and losses:</b>	
Costs of goods sold	\$ 6,740
Salaries	186,018
Payroll tax	17,564
Employee benefits	72,429
Advertising	377
Depreciation	24,023
Dues and subscriptions	191
Garden construction	34,601
Gas and oil	9,578
Insurance	15,629
Mileage and parking	4,898
Miscellaneous	622
Newsletter	3,761
Postage	872
Printing	731
Professional services	14,113
Program service expense	27,427
Repairs and maintenance	9,217
Security services	864
Supplies	33,889
Telephone and internet	3,395
Staff Development	1,300
Utilities	<u>14,611</u>

**Total expenses**      **\$ 482,850**

**Change in net assets**      **\$ 64,564**

### Balance Sheet as of 09/30/11

#### ASSETS

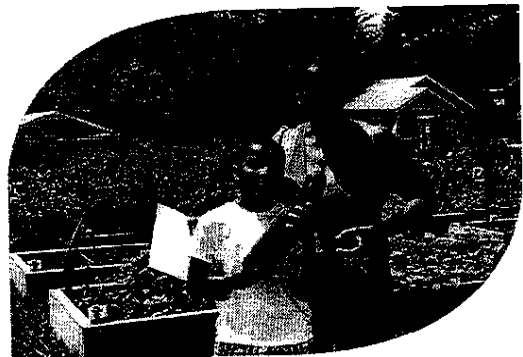
	2011
<b>Current assets:</b>	
Cash	\$36,019
Accounts receivable	72,162
Grants receivable, current	54,695
Prepaid expenses	13,313
Investments	<u>22,844</u>
<b>Total current assets</b>	<b>199,033</b>
 Grant receivable, noncurrent	 11,100
 Property and equipment	 <u>347,283</u>

**\$557,416**

#### LIABILITIES AND NET ASSETS

<b>Current liabilities</b>	
Accounts payable	\$12,675
Accrued expenses and other liabilities	<u>16,710</u>
<b>Total current liabilities</b>	<b><u>29,385</u></b>
 <b>Net assets:</b>	
Unrestricted:	
Board-designated	140,000
Undesignated	305,287
Temporary restricted	<u>82,744</u>

**\$557,416**



# *Schoolyard Gardens: 100 and still Growing*

2011 brought even more growth to the Schoolyard Gardens program – we now have over 100 schools enrolled! Throughout the city, school gardens enhance classroom learning, provide physical activity and allow students the opportunity to become more familiar with the food they eat. In 2011, over 4,000 students throughout the city were able to eat the fresh produce they worked hard to grow and many were able to share their harvests with their friends and families. With the 2011 growing year coming to an end, the Schoolyard Gardens program would like to share some highlights from this past year.

## **Troost Elementary**

Troost Elementary's Local Investment Commission (LINC) program has allowed students from Kindergarten through 6th grade to plant, maintain and harvest six raised beds during their after-school program. The staff and students are equally enthused about working in the garden and spend three afternoons a week weeding, watering and harvesting. The garden is located near the playground so that families walk past the garden when they walk in and out of the school. This allows the students the opportunity to show their parents the hard work they put into the garden and to share their knowledge of what is growing in the garden. Often, parents and students stop by the garden and pick out the necessary vegetables to make a salad or a side dish for their dinner.

## **Ridgeview Elementary**

The inaugural year of the garden at Ridgeview Elementary has been a school-wide project. The school has committed to providing students and families with fresh produce. This past year, each grade tended to one raised bed, planting a variety of vegetables for the whole school to share. The garden gave students a chance to experience gardens and the creatures that come with them. The fourth grade classes made it their mission to spend recesses picking off any unwanted caterpillars and other bugs from their garden. Ridgeview students also found a new favorite snack in the garden, Sweet Ann Snap Peas. Students ate the peas straight from the garden and are excited to plant many more peas this upcoming spring. In May the Ridgeview garden, art class and students were featured on KCPT's Imagine KC "Building Healthy Local Food Systems," because of their hard work and enthusiasm surrounding the garden. Ridgeview has continued to look for new ways to enhance their garden. The 5th grade art class painted rain barrels with different nature themes including a replication of Van Gogh's *Starry Night*. Excitement over the garden continues to grow and the students will plant two fruit beds in the spring.

## **McKinley Elementary**

The third, fourth, and fifth grade classes at McKinley Elementary each manage a raised bed garden on a lot next to McKinley. Besides harvesting fresh vegetables from the garden McKinley students use their garden as an additional learning tool. Math and science lessons are reiterated throughout the garden as students measure the distance to plant the seeds and calculate the germination times for the seeds. McKinley students choose to grow vegetables that allow the students to make easy snacks in their classroom. The whole school has taken great pride in the garden; a sign was proudly erected, stating "McKinley's Schoolyard Garden." In late May students planted sunflowers, peppers, and tomatoes in their garden. In September the students were welcomed back to school by 12 foot tall sunflowers, and peppers and tomatoes that were ready to be harvested.

## **Hogan Prep Academy**

Hogan students love to garden – and they really love eating their produce! Since the garden was first built in the spring of 2010 Hogan students have expanded their garden more within the last year. This spring, the fence along the garden had to be expanded so that students could add an additional four raised beds and an outdoor classroom to their garden. The garden now contains 20 raised beds all planted, maintained and harvested by students. Students also worked to level ground, lay bricks and wheelbarrow soil to construct a completely edible landscape in the front of their school. In the spring the students will plant the landscape with perennial herbs, fruits and flowers. Even with this summer's excessive heat and little rain Hogan's garden still

produced a bounty; students harvested more than 300 pounds of vegetables and fruit. The produce from the garden is placed directly in the school cafeteria, allowing the students a fresher, healthier lunch. KCPT featured Hogan's edible landscaping project in May on Imagine KC "Building Healthy Local Food Systems." Hogan was also a featured stop on the Urban Farm and Garden Tour in June.

## **Calvary Temple Afterschool Program**

Children who attend the Calvary Temple Afterschool Program have had an exciting year in their garden. The garden season began with Missouri's first lady, Mrs. Georganne Nixon, helping plant a spring garden. From there students spent the rest of the spring and summer maintaining their nine raised beds. For many of the students the garden gave them the opportunity to try fresh vegetables that they had not previously had. The garden gave students a chance to see where food comes from before it is in the grocery store. Students tasted everything that was grown in the garden, and after using the vegetables to supplement lunches and salads to serve as an afternoon snack, there was still plenty of produce to go home with the families at the end of the day. Students were so excited about the varieties of vegetables they grew that they made lists of foods they would like their parents to buy at the store. This fall students continued



gardening, studying root vegetables and comparing the germination timeline for a variety of different vegetables. The students ended the gardening season with a fall harvest party, making salads and having apple taste tests.

#### ***Guadalupe Center - Plaza de Niños***

The pre-kindergarten class (The Eagles) at Plaza de Niños became the keepers of the garden this year. The Eagles helped the younger classes keep up with the weeding and watering in the garden and

kept track of the whole garden's progress. The garden is situated right outside their classroom, just a few feet away from their playground. This location allows the children to observe the garden during their learning time inside and students often wander around the garden during their outside play. This year, the class studied the parts of the plant and learned how yummy vegetables start as tiny seeds. One of the garden highlights this year was making carrot cake in the classroom from carrots that were pulled fresh from the garden.

## *School Gardens 10/01/010 - 09/30/2011*

### ***Kansas City, MO***

Academie Lafayette  
ACE School  
B.W.Shepard State School  
Barstow School  
Benjamin Banneker Charter School  
Boone Elementary  
Border Star (Planting Seeds for the Future)  
Border Star Montessori  
Burke Elementary  
Calvary Temple After School Program  
Canada Day Care Center  
Canada's Precious Childcare  
Carver Dual Language Elementary  
Center Elementary  
Center High School  
Cerner Innovation Kids  
The Children's Place  
\*Country Club Christian Preschool  
Crispus Attucks Elementary  
Cristo Rey  
De La Salle Education Center  
Delano Alternative School  
Dobbs Elementary  
Eastwood Hills Elementary  
Foreign Language Academy  
\*George Melcher Elementary  
Gillis School  
Glad Tidings Development Center  
Gordon Parks Elementary  
Hartman Elementary  
Hogan Prep Academy  
Holliday Montessori  
Holy Cross Catholic School  
Ingels Accelerated Elementary  
James Elementary  
Johnson Elementary  
Kansas City Academy  
Kansas City Urban Youth  
KIPP Endeavor Academy  
Learning As We Grow  
Life A New Prep

Longfellow Elementary  
Metro Early Learning Center  
Niles Home for Children  
Notre Dame de Sion  
Operation Breakthrough  
Our Lady of the Angels Catholic School  
\*Our Lady of Lourdes Catholic School  
\*Pitcher Elementary  
Plaza de Ninos  
Rainbow School  
Research Child Development Center  
Santa Fe Elementary  
\*Satchell Paige Elementary  
Schmidt Family Homeschool  
Score 1 for Health  
Scuola vita Nova Charter School  
Southwest Early College Campus  
St. Paul's Episcopal Day School  
Sunrise Montessori  
Symington Elementary  
Thomas Rogue Head Start  
Troost Elementary  
Truman Elementary Afterschool  
UMKC Berkley Child and Family  
Development Center  
University Academy  
Urban Community Leadership Academy  
Warford Elementary  
Wendall Phillips Elementary  
Wheatley Elementary

### ***North of the River***

Briarcliff Elementary  
New Mark Middle School  
Oakhill Day School  
Oakwood Manor Elementary  
Parkhill Early Childhood Center  
Parkville Children's Cottage  
St. Charles Borromeo School

### ***Jackson County (not KCMO)***

Bryant Elementary

\*Conn-West Elementary  
Elm Grove Elementary  
Fairmont Elementary  
Franklin Smith Elementary  
Milestone Academy  
\*Nativity of Mary Catholic School  
New Trails Early Learning Center  
Nowlin Middle  
Rainbow Center for Communicative  
Disorders  
\*St. John LaLande Catholic School  
Sugar Creek Elementary  
Thomas Hart Benton Elementary  
\*Thomas Ultican Elementary  
Van Horn High School  
William Chrisman High School

### ***Kansas***

\*Argentine Middle School  
\*Banneker Elementary  
Beth Shalom School  
\*Caruthers Elementary  
Clear Creek Elementary  
Commanche Elementary  
Eugene Ware Elementary  
Frank Rushton Elementary-Rosedale  
Healthy Kids  
Goddard School Olathe  
Goddard School Overland Park  
M.E. Pearson Elementary  
McKinley Elementary  
\*Northwest Middle School  
Our-Lady's Montessori School  
Peppermint Patty's Preschool  
\*Quindaro Elementary  
Ridgeview Elementary  
\*Rosedale Middle School  
Rosedale Ridge Community Center  
Wyandotte High School

*\*Schools not enrolled in Schoolyard Gardens Program.*

# Community Partner Gardens 10/01/10 - 09/30/2011

## Kansas City, MO

Amethyst Place  
Beechcraft Neighborhood Garden  
Blue Hills Community Garden  
Bowers Memorial CME Church  
Canady Bunch  
Centennial United Methodist Church  
Columbus Park Plaza  
Community Action Council  
Community of the Good Shepherd  
Countryside Homes Association  
Garden  
De La Salle Community Garden  
Don Bosco Community Garden  
DST 18th Broadway  
DST 51st & Main  
DST Jefferson Garden  
East 24th Street Neighborhood  
East Hills Village  
Emmanuel Family and Child  
Development Center  
Freeway Park Community Garden  
Friendship Baptist Church  
Friendship Village  
Front Porch Alliance - Highland  
Front Porch Alliance - Michigan  
Green Acres  
Gregory Ridge Homeowners  
Gregory Ridge Living Center  
Guinotte Manor Community Garden  
Habitat ReStore  
Harvesters  
Haven of Hope  
Heartland All Species Project  
Holy Family House  
Hopeful Gardens  
Ivanhoe Demonstration Garden  
Ivanhoe Neighborhood Council  
Ivanhoe/Richardson Community  
Garden  
Junior League of Kansas City  
KC Art Institute Home Grown Garden  
Kansas City Rescue Mission  
Lincoln Univ. Coop. Extension  
Linwood YMCA Community Garden  
Manheim Park Neighborhood

Community Garden  
Marlborough Manor Garden  
Master Gardeners Demo Garden  
Mattie Rhodes Center Jubilee Garden  
Midwest Center for Eating Disorders  
MOM Coop Garden  
Morning Star Baptist Church  
Mount Sinai Community Garden  
North Blue Ridge Neighborhood  
NOVA Center  
Nowlin Hall Community Garden  
Operation Breakthrough  
Pemberton Heights Garden  
Plaza/Westport Community Garden  
Residences of West Paseo  
reStart, Inc.  
Ridgeview Village Community  
Garden  
Rock Solid Urban Impact  
Ronald McDonald House  
Salvation Army  
Sheffield Place  
Shiloh Missionary Baptist Church  
St. James Catholic Church Garden  
St. James at 40 Acres  
St. John's Gardens  
St. Louis Church Garden  
St. Luke's United Methodist Church  
Garden  
Santa Fe/St. Paul Community  
Garden  
St. Peter's Church Garden  
St. Therese Little Flower  
Switzer Neighborhood Farm  
Swope Health Center  
Swope Park Community Garden  
Temple of Faith Missionary Church  
Garden  
The Villa Adult Day Care Center  
Troost Village Community Garden  
Troostwood Youth Garden  
Truman Medical Center  
Unity Church  
Urban Green Dreams #2  
Urban Green Dreams Project  
VA Medical Center

Vine Street Manor Network  
Vineyard Community Center  
Visitation/St. Francis Community  
Garden  
Washington Wheatley Neighborhood  
Community Garden  
Westside Community Action Network  
Whatsoever Community Center  
Willow Tree 30 Women  
2nd Presbyterian Church  
25th Street Garden Club  
40 Acres and a Mule

## North of the River

Garden Grow - Fairview Christian  
Church Community Garden  
Grace Baptist Church  
Grace Episcopal Church Garden I & II  
Hermanns Community Garden  
Pine Ridge Community Garden  
Platte County Community Garden  
Pleasant Valley Baptist Church  
Synergy Services Garden

## Kansas

Bethany Towers  
Bethel Neighborhood Center  
Cathedral Community Garden  
Chelsea Community Garden  
Community Baptist Church  
El Centro, Inc  
Essex St. Community Garden  
Growing Growers  
Hillcrest Transitional Housing  
Holy Cross Catholic Church  
Community Garden  
Jardines Community Garden  
Mennonite Voluntary Services  
Garden  
Ministerio Internacional Ciudad De  
Sion Garden  
Minnie Street Garden  
Old Mission United Methodist  
Church Garden  
Park Woods Garden  
Prince Hall Masonic Foundation

Rainbow Mennonite Church  
Ridgeview Village Community  
Garden  
Rosedale Congregational  
Community Garden  
Salt of the Earth 3rd Street Church  
of God Community Garden  
St. Joseph's Community Garden  
Strawberry Fields Community  
Garden  
Strugglers Hill/Roots Garden  
Temple B'Nai Jehudah  
Tug-Troup Urban Garden  
Veronica's Voice  
8th Street YMCA of KCK

## Jackson County (not KCMO)

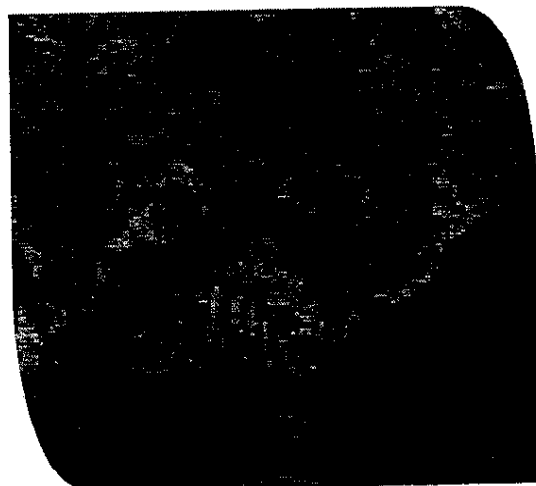
Bennington Street Garden  
Boys & Girls Club - Leslie Unit  
Deerbrook Covenant Church  
Fairmont Heights Garden  
Faith Covenant Church  
Garden of Hope  
Green Thumb Club Garden  
Hawthorne Place Apartments  
Hill Cumorah Restoration  
Hocker Heights  
ICAN  
Lutheran Good Shepherd Mission  
MCC-Longview AGBS Dept.  
Oil Light Ministries Community  
Garden  
Old Oak Tree Community Garden  
Prairie Estates  
St. Anne's Episcopal  
St. Mark's United Methodist  
St. Paul Community Garden  
The Pathways by Net Giver Fdtn.  
Tongues of Fire Community Garden  
Woods Chapel Senior Housing  
63rd Street Community Garden

## Cass County MO

Testimony Garden  
Uplift Gardens

## Community Partner Garden Profile: Blue Hills Community Garden

Blue Hills Community Garden was started two years ago by Blue Hills Community Services. Staff member Leigh Blumenthal spearheaded the project, organizing neighborhood members to help build the garden. The garden's 12 raised beds are each planted with a different crop and neighborhood members take turns helping to water, weed and harvest. Work days are also held regularly to help tackle larger projects and to build community. They recently added four more raised beds to their garden with hopes of growing even more next year!



# 2011 - The Year of New Community Gardens

When KCCG staff members think back on 2011, they will remember it as the year of new community gardens. Even with snow still on the ground last February, we knew that the 2011 gardening season was destined to be an eventful one. Over the winter KCCG staff had discussed starting new community gardens with several groups and so as March came and the snow began to melt, we were ready and waiting for the adventure ahead.

As gardening continues to increase in popularity, Kansas City area



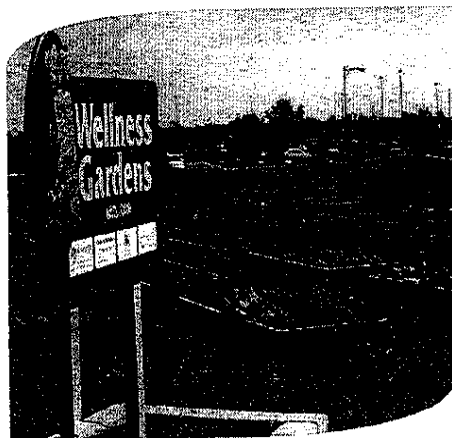
residents are looking more and more for viable gardening space. From apartment dwellers to renters to residents with beautiful old oaks shading their backyards to people wanting a fun way to meet their neighbors, community gardening space is in demand.

Until this year, KCCG has operated two large community garden sites. Swope Park Community Garden (with 81 ground plots and 56 raised beds) and Freeway Park Community Garden (with 78 ground plots and 20 raised beds). As the waiting list grew to over 60 people last year for Swope Park Garden alone, we knew that something had to be done.

So, when the Kansas City, Missouri School District, Research Medical Center and the City of Kansas City, Missouri all approached us about starting new community gardens, we excitedly jumped on board. Setting up these community gardens included plowing, tilling, building fences, installing irrigation, constructing raised beds, marking off plots, meeting with gardeners, managing the sites, and growing seeds and plants for all involved.

With most of the work of creating these gardens behind us, it is fun to look back and see the opportunities that these gardens have created.

Ivanhoe/Richardson Community Garden is located on the playing fields of Kansas City, Missouri School District's Teacher Learning Center at 35th and Park. Thirty-four ground plots were tilled up this spring and 20 raised beds were put in by Deloitte employees on a volunteer day. This garden is also home to the Schoolyard Gardens Demon-



stration Garden where teachers can see first-hand how school gardens work and get ideas for gardens at their schools. Ivanhoe/Richardson also offers room to expand both ground plots and raised beds.

Research Medical Center Community Garden, located on Meyer Blvd. and Prospect Ave. in Kansas City, MO, is the gardening home to a wide variety of people. With (48) 4'x12' raised beds, this garden provides gardening space for community members who don't want the challenge of a ground plot and RMC staff members who want to grow healthy food for their departments and to take home to their families. Additionally, the garden has proven to be a sanctuary for hospital patients and their visitors who need a change of scenery or somewhere quiet to rest. The garden has also inspired a walking trail around the garden space and the planting of several fruit trees.

Eastwood Hills Community Garden is located at the site of the old Municipal Corrections Institution. Although we hoped to have the garden open this year, a rainy spring and a hot summer combined with the large amount of work that needed to be completed set us back a few months. This garden will be open in spring of 2012 and boasts 58 ground plots and 44 raised beds.

It has been exciting for us to see these gardens complete and to meet with the gardeners that will work the soil, plant seeds and grow food for their families and neighbors. If you are interested in renting a garden plot at one of these locations, please contact



## Community Partner Garden Profile: Jardines Community Garden

Throughout the past two years, the Ochoa family of Kansas City, KS has been working with the Latino Health for All Coalition to promote and establish gardens in their community. This past year, the Ochoa's received a mini-grant from LHFAC to create a community garden near their home and to help establish 10 backyard gardens in their neighborhood. The goals of the Jardines Community Garden include: increasing access to fresh fruits and vegetables, lowering grocery bills, building community among neighbors and providing gardening and nutrition education.

Despite hot temperatures and several waves of insect infestations, the Ochoa's had a very successful year of gardening. During the summer they grew lots of tomatoes, cucumbers and squash, but their prize crop was their chilis (peppers) which were numerous in quantity and variety.

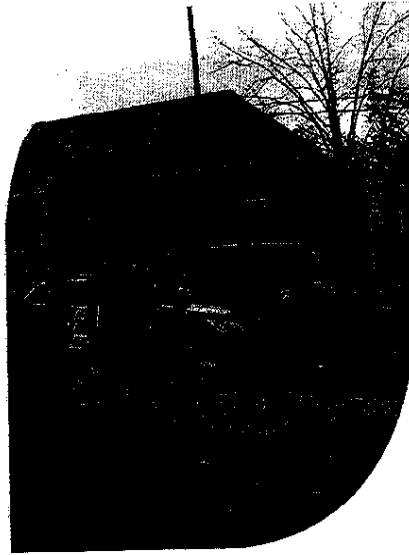
The Ochoa's continue to work closely with LHFAC and have received a grant to help even more of their neighbors establish backyard gardens in the coming year. The Ochoa's passion for gardening and nutrition education is an inspiration and a great asset to their community.

# 2011 Mander Award Winners

Each year we are honored to work with groups and individuals gardening around the city. We are always impressed with the hard work, creativity and productiveness of Kansas City's gardeners. Throughout the year, KCCG takes nominations for groups and individuals that demonstrate this "spirit of community gardening." The nominations are filed into three categories- community partner gardens, school-yard gardens and individual gardeners- and a winner is selected from each category. This year we are pleased to present this award to St. Joseph's Neighborhood Garden, Benjamin Banneker Charter Academy of Technology and home and community gardener, Earl Moore.

## Community Partner Garden

St. Joseph's Neighborhood Garden is located just south of Central Avenue on 8th St. in Kansas City, KS. St. Joseph's sits on a vacant corner lot and has both raised beds and ground plots. Plots are distributed to gardeners based on the number of the people gardening in each household.



St. Joseph's Garden was co-founded by Pat Lawson and Ann Dercher over 13 years ago. They have also worked to involve the Wyandotte County Master Gardeners in a number of valuable ways. At one point the vacant lot that the garden sits on was sold. Pat helped to facilitate the transaction and keep the garden going with the new owner. St. Joseph's has done a great job of adding organic matter to their garden plots- improving the success of the gardeners growing there. This fall gardeners are helping to expand the garden by adding in several more raised beds.

This Community Partner Garden embodies the spirit of community in the diversity of their gardeners. Single adults, families with young children and young couples all garden at St. Joseph's. There is also a wide variety of people from different backgrounds gardening, including Asian, Hispanic and even an African woman from Togo.

St. Joseph's gardeners are grateful for a location to grow their own food right in their community and hope that the garden will continue for at least another 13 years.

## Schoolyard Garden

Benjamin Banneker Charter School of Technology (BBCAT)'s Green Griots Schoolyard Garden, located at 6401 Rockhill Road, was built on one mission: feed the hungry. This is what one eighth grade student uttered in the spring of 2008. She wanted her classmates to give back to the community in an awesome way and all agreed that starting a garden was the right thing to do.



Built from the ground up and maintained 100% by students, the garden yields hundreds of pounds of fresh produce that is donated to Harvester's Food Bank and BBCAT students and their families. Student Griots work hard to earn the right to work in the garden; then work

even harder to stay on the garden staff. Students must maintain a rigorous academic and social protocol, while giving back to their fellow students through mentoring and to the community through the growing and harvesting of food.

From this venture, students have been involved with other community programming such as 1 Homeless Night, The Kansas City Farms and Gardens Tour, The Presidents Volunteer Service Award Program and the Marlborough Community Rain Barrel and Gardens Project. The Green Griots' mission to "provide fresh, nutritious food items to Kansas Citians regardless of opportunity or circumstance" demonstrates the true spirit of community gardening.

## Individual Gardener

Earl Moore's passion for gardening started about 12 years ago when he offered to help a friend with her garden after her husband passed away. He thought he would just help keep the garden going until the end of the summer, but by then he was hooked on gardening.



Earl rents two plots at the Swope Park Community Garden that he keeps in immaculate condition every year. Even during the brutally hot summer days, Earl spends several hours in his garden making sure his plants have enough water to make it through the day.

In addition to his bountiful garden, the thing that makes Earl the best candidate for this award is his willingness to help others with their gardens. Earl has gained a reputation for always being willing and ready to help others, whether by sharing produce or by helping those who enjoy gardening but can't manage the equipment or who have become unable to care for their gardens. This past year he helped at least 10 Swope Park gardeners with their gardens on a regular basis.

Earl's excitement about gardening is contagious. Last year when KCCG opened up Ivanhoe/Richardson Community Garden, Earl recruited several family members to garden there, working with them to help them have successful gardens. Earl's hard work, dedication and willingness to assist others are all qualities that demonstrate the spirit of community gardening.



# Volunteers 10/01/10 - 09/30/11

Patt Barr  
Bobbie Batts  
George Batts  
Carrie Beachner  
Corey Belcher  
Robert Black  
James Boatman  
Susan Bray  
Emilee Broll  
Verma Brown  
Burns & McDonnell Interns  
Ryan Budden  
Lyndon Chamberlain  
Brigitte Chaurand  
Joy Costa  
Dorothy Curry  
Deloitte Employees  
Greg Drown  
Collette Eastwood  
Helen Eastwood  
Johnnie Ellison  
Victor Ellison  
Arnette Elmore  
Lisa Farmer  
Federal Reserve Bank  
Employees  
Leanna Flandermeyer

Jerome Franks  
Isabella Garrett  
Riley Garrett  
Dody Gates  
Willie Gerald, III  
Lorelei Gibson  
Stacey Gilio  
Batsheva Glatt  
Gerald Gordan  
Amy Grounsell  
Carlene Hall  
Carolyn Hall  
Rick Hall  
David Hammonds  
Deanna Hefferd  
Kim Hess  
Brenda Holbrook  
Robert Horton  
Sammy Howell  
Lois Hutchins  
Blair Hyde  
Laurel Johnson  
Vicki Johnson  
Becky Johnston  
Carolyn Kroh  
George Kroh  
Larry Lehman

Laura Lewis  
Austin Leyba  
Robert Leyba  
Vincent Magers  
Henry Marder  
Henry Marks  
Diane Marrin  
Virginia McCanse  
Carrie McDonald  
Angie Medina  
Jo Missildine  
Earl Moore  
Cecil Neal  
Deborah Page  
Deandra Palmer  
Jordan Payne  
John Perkins  
Ed Peterson  
Barb Phillips  
Patty Piatz  
Izola Pickett  
Donna Putnam  
Red Lobster (Metcalf)  
Employees  
Crystal Reynolds  
Tyrese Reynolds  
Malina Richardson

Jan Riss  
Skyler Robinson  
Rich Roduner  
Steven Roduner  
Ernie Rogers  
Gabbi Self  
Marley Schmidtlein  
Laura Scott  
Kathy Smith  
Anonda Sallmon  
Daniel Sharda  
Sally Sharda  
St. Andrews Episcopal  
Church Members  
Nancy Stark  
Eddie Strickland  
Lucy Strickland  
Lauren Sukey  
John Thompson  
Myra Thompson  
Pati Thompson  
Eve Tracy  
Susie Vawter  
Alison Ward  
Joe White  
Augusta Wilbon  
Jennifer Wolfe  
JoBeth Zubkoff

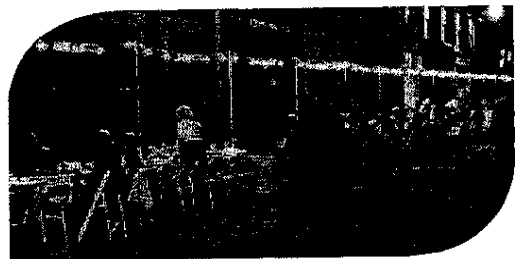
## foodNow supports KCCG

On a perfect August evening, nearly 300 people converged in the West Bottoms to support local food. The second annual foodNow showcased the bounty of local farmers through the incredible culinary skills of some of our finest local chefs. foodNow is an all-volunteer gala that provides a creative approach to raising awareness and funding for local, healthier eating in Greater Kansas City.



With the support of a dedicated volunteer committee and community support, the event came together to provide guests with a memorable night on the cobblestones under the historical 12th street bridge. The site, normally bustling with cars, was transformed into an elegant streetscape reminiscent of old-world Europe. The stars of the evening were our local farmers providing the sustenance for the event, giving our local chefs the provisions on which to work their magic.

This year's event beneficiaries are: Kansas City Beans&Greens Program; Greater Kansas City Food Policy Coalition; Get Growing KC (a collaborative project of the Kansas City Community Gardens, Cultivate Kansas City and Lincoln University Extension). Preliminary numbers indicate the event has surpassed last year's fundraising efforts. Thanks to all who attended, volunteered and promoted this year's event.



## *Contributors 10/01/10 - 09/30/11*

### *Individuals*

Elizabeth Allen  
Helen & William Ambrose  
Russell & Carolee Atha  
Susan Bailey  
Carole & Fred Barth  
Jacob W. Bayer, Jr.  
Nancy Beaham  
Richard Beck  
Jeanne A. Bleakley  
Mary Shaw Branton  
Amnee Brown  
Jill Bunting  
Charles Burry  
Elizabeth Burry  
Kay Callison  
Susan & Gerald Carlson  
Steve & Maria Casteel  
Michael Churchman  
Helene Ann Cohen  
David & Kathryn Dingley  
Colette Eastwood  
Dr. & Mrs. Reid Ecton  
Mr. & Mrs. Michael Fields  
Leanna Flandermeyer  
Rebekah Foote  
Lucy Foy  
Sarah Frederick  
Venia Garrison  
Lorelei & David Gibson  
Richard Gintowt  
Molly Gosnell  
Rebecca Hagan  
Jill & Donald Hall  
Dr. & Mrs. Thomas B. Hall, III  
Jean Hartz  
Katherine Hayman  
Mr. & Mrs. James Hebenstreit  
John & Janice Henggeler

Mr. & Mrs. I. O. Hocakday, Jr.  
Laura Rollins Hockaday  
Mr. & Mrs. Richard Hollander  
Stanley & Emily House  
Arleta Howard  
Lucy Jackson-Foy  
Jenny the Hairdresser  
Betty Jenkins  
Linda & Bryan Johnson  
Jennifer & Mike Johnson  
Becky & Rob Johnston  
Joy Kaplan  
Nancy Kaiser-Caplan  
Lala Kumar  
Bill Lamb  
Jane & Stephen Lambert  
Sharman Lang  
Helen Lea  
June Lile  
Renee Locker  
James Lonergan  
& Ruth Ann Burdett  
Katherine M. Lynch  
Bill & Peggy Lyons  
K. Janelle Matchette  
Ginny & Lynn McCanse  
Betty Jo & Henry Marder  
Patricia Micheletti  
Richard Moore & Linda Hezel  
Mr. & Mrs. George Morris, Jr.  
Deborah Negus  
Marion Paulette  
Deandra Palmer  
Ciana Piraro  
Marci Piraro  
Peggy Pruitt  
Ann Readey  
Priscilla Reckling  
Charles Robinson

Paul & Julia Rola'  
Josephine Sandlitz  
Melynn Sight  
Mary Silwance  
Catherine Smith  
Debra Smith & Mark Ryan  
Nancy Stark  
Gregory Swartz  
Tracey Taylor  
Brandon Thompson  
Mariel Tyler Thompson  
Jean D. Wagner  
Helen West  
Marie Whitacre  
Augusta Wilbon  
Eulalie B. Zimmer

### *Government*

City of Kansas City, MO  
KCMO Parks & Recreation

### *Supporting Groups*

CROP Walk  
Food Now  
Inter-City Sugar Creek  
Optimist Club  
Junior League of Kansas City  
KC Healthy Kids  
KC Herb Study Group  
Latino Health For All Coalition  
Leawood Garden Club  
Les Dames d'Escoffier  
Project Change  
Rotary Club of Leawood  
Slow Food Kansas City  
The Village Church

### *Supporting Businesses*

Burns & McDonnell

Commerce Bancshares Foundation  
DST Systems, Inc.  
Hallmark Corporate Foundation  
Prydes of Old Westport  
Sullivan's Greenhouse

### *Supporting Foundations*

Anonymous  
Black Community Fund  
Carter Memorial Trust  
Curry Family Foundation  
Elaine Feld Stern Charitable Trust  
Edward & Kathryn Mader Foundation  
Gunnard & Charlotte Johnson Foundation  
Health Care Foundation of Greater Kansas City  
Helen S. Boylan Foundation  
J. B. Reynolds Foundation  
John B. Rust Charity Fund - Bank of America, Trustee  
Lorraine & Norman Martin Gift Fund  
Louis & Dorothy Cumonow Foundation  
Menorah Legacy Foundation  
Miller Nichols Charitable Foundation  
Oppenstein Brothers Foundation  
Powell Family Foundation  
R. A. Long Foundation  
W. J. Brace Charitable Trust  
Bank of America, Trustee  
William T. Kemper Foundation, Commerce Bank, Trustee

### *In Memory of*

Mark Litteken  
Frank Koger

## *KCCG's Get Growing Kansas City Team Members Assist Community Partner Gardens*

Kansas City Community Gardens' Community Partner Garden program has been growing in leaps and bounds over the past several years. Community Partner Gardens are gardens maintained by community groups to provide food for families, their members, their neighborhoods, local food pantries, etc. Community Partner Garden groups include churches, neighborhood organizations, non-profits, group homes, senior centers and many others. We now have over 150 Community Partner Garden members working with KCCG.

Until this year, we have not had any staff members specifically dedicated to working with Community Partner Gardens. That's why we were so excited about the opportunity to partner with Cultivate Kansas City and Lincoln University Extension on the Get Growing KC campaign. The goal of this campaign is to get residents in the Kansas City metro area the assistance they need to grow food in a productive way. This two year campaign will promote not only the growing and selling of food, but will also focus on food access in food desert areas.

What is especially exciting for KCCG is that we were able to hire two new part-time staff members to work with existing and new Community Partner Gardeners. Since starting in July, our Get Growing Team members have already met with a number of our Community Partner Gardens and have even signed up some new groups. Team members have helped organize garden constructions, have assisted groups with planning for the next year and have done a number of presentations on gardening.

We are so excited to be able to offer our Community Partner Gardens more assistance with making their gardens successful. If you have a group or community garden that you would like to get involved, please contact us.

# Adopt-A-Garden Donors 10/01/10 - 09/30/11

Joan Adam  
 Bill & Helen Ambrose  
 Russell & Carolee Atha  
 Susan Bailey  
 Mrs. Paul Bartlett  
 Mr. & Mrs. Charles Bleakley  
 Elizabeth Burry  
 Dixie Buss  
 Rita Cain  
 Michael Churchman  
 Janis Combs  
 Copaken Family Foundation  
 Bruce Cornish  
 Myrna Corpeny  
 Shirlene Damico  
 Diane Doran  
 Greg & Marta Drown  
 Allan Fanning  
 Sarah Frederick

Mercer Gilmore  
 Mr. & Mrs. Frederick Goodwin  
 Rebecca Hagan  
 Mr. & Mrs. Donald Hall  
 Geoff & Jen Henggeler  
 Paget Gates Higgins  
 Arieta Howard  
 Becky & Rob Johnston  
 Nicki Johnston  
 Cliff Jones  
 Nancy Kaiser-Caplan  
 Mrs. Edward Kander  
 Katie Kays  
 Carolyn & George Krob  
 Mrs. James T. Lacy  
 Jewett & Vicky Logan  
 Elizabeth Marder  
 Henry & Betty Jo Marder  
 Dr. & Mrs. Lynn McCanse

Mary McClure  
 Jo & Gary Missildine  
 Nancy Mohr  
 Mr. & Mrs. William Nelson  
 Ken Patrick  
 Marilyn Pedretti  
 Carol Perry  
 Paul & Julia Rola  
 Beverly Rose  
 John T. & Patricia Russell  
 Josephine Sandlitz  
 Jean Sharda  
 Carol Shifflett  
 Linn Slater  
 Sarah West  
 David Wheaton  
 Gayle Yelenik

## Fall Family Festival 2011



A glorious fall day with sunshine, soft clouds and a gentle breeze was the setting for the best Fall Family Festival yet. The 4th annual Fall Family Festival on September 10th set attendance records with a total of 530 attendees and volunteers enjoying the day. Even though the summer was hot and dry, the garden was an oasis of green with many vegetables available for tasting.

Favorite activities included the animals from Lakeside Nature Center, gourd painting, feeding the fish, face painting, the bug and microscope station, and planting your own basil seedling. The most popular activity was having a free horse ride. Sammy Howell, KCCG board member, brought three of his horses and gave guided rides to kids of all

ages. The KCMO library also handed out free books for children. Volunteer chefs from Les Dames d'Escoffier grilled samples of vegetables and fruits and volunteers from the Spinners and Weavers Guild demonstrated spinning and talked about the role of cotton in history.

Comments heard through the day included "this is the best ever", "I want to come back again" or "do we have to leave?" as mom was tugging the child's arm at the end of the day.

Join us next year for the 5th annual Fall Family Festival on September 8, 2012.



# Please Support The 19th Annual Adopt-A-Garden Campaign

Kansas City Community Gardens announces the 19th annual "Adopt-A-Garden" campaign to help raise financial support for gardens in the metropolitan area. Anyone can help by making a contribution to sponsor a garden. These levels include to "sponsor" a single family garden, a vacant lot garden, a community garden site, a schoolyard garden or a community partner garden.

Your support will provide vegetable seeds, plants, and fertilizer to enable low-income families and community groups to produce food from their garden plots. Contributors of \$50 or more will receive background information and a photo of their adopted garden.

Please fill out the attached form and mail it with your contribution to KCCG, 6917 Kensington, Kansas City, MO, 64132.

To make a secure on-line donation by credit card:

- 1) go to [www.kccg.org](http://www.kccg.org)
- 2) click on "Donate"
- 3) click on "Adopt-A-Garden" and follow the instructions.

For information on how you can adopt a garden, call 816-931-3877.

YES, I want to help grow a Kansas City Community Garden

Name \_\_\_\_\_

Address \_\_\_\_\_

City \_\_\_\_\_ State \_\_\_\_\_

Zip \_\_\_\_\_ Phone \_\_\_\_\_

E-mail Address: \_\_\_\_\_

## Adopt-A-Garden Levels of Support

- \_\_\_ \$25 - "Seed"
- \_\_\_ \$50 - "Sprout"
- \_\_\_ \$100 - "Seedling"
- \_\_\_ \$250 - "Vine"
- \_\_\_ \$500 - "Community Trellis"
- \_\_\_ \$1000 - "Cornucopia"
- \_\_\_ Other (any amount will help) \$ \_\_\_\_\_



KANSAS CITY  
COMMUNITY  
GARDENS

6917 Kensington  
Kansas City, MO 64132  
816-931-3877

Non-Profit Organization  
U.S. Postage  
PAID  
Kansas City, MO  
PERMIT NO. 4516

Kansas City Community Gardens is a not-for-profit corporation that assists low-income households and other residents of the Kansas City metropolitan area grow vegetables and fruit from garden plots located in backyards, vacant lots, schoolyards and community sites.

For information, call 816-931-3877 or visit our offices at 6917 Kensington, Kansas City, MO 64132  
[www.kccg.org](http://www.kccg.org)

